

**ATTENTION PHARMACIST:** Detach “Patient’s Instructions for Use” from package insert and dispense with the product.

**Atrovent®**  
(ipratropium bromide)  
**Nasal Spray 0.03%**



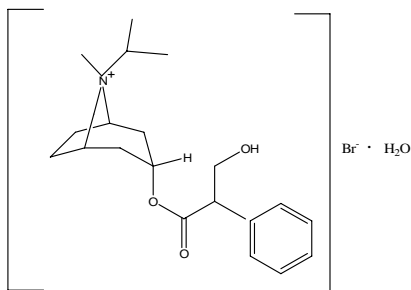
**21 mcg/spray**

**Rx only**

**Prescribing Information**

**DESCRIPTION**

The active ingredient in ATROVENT Nasal Spray is ipratropium bromide (as the monohydrate). It is an anticholinergic agent chemically described as 8-azoniabicyclo[3.2.1]octane, 3-(3-hydroxy-1-oxo-2-phenylpropoxy)-8-methyl-8-(1-methylethyl)-, bromide monohydrate, (3-endo, 8-syn)-: a synthetic quaternary ammonium compound, chemically related to atropine. The structural formula is:



$C_{20}H_{30}BrNO_3 \cdot H_2O$       ipratropium bromide      Mol. Wt. 430.4

Ipratropium bromide is a white to off-white crystalline substance, freely soluble in water and methanol, sparingly soluble in ethanol, and insoluble in non-polar media. In aqueous solution, it exists in an ionized state as a quaternary ammonium compound.

ATROVENT Nasal Spray 0.03% is a metered-dose, manual pump spray unit which delivers 21 mcg ipratropium bromide (on an anhydrous basis) per spray (70 $\mu$ L) in an isotonic, aqueous solution with pH adjusted to 4.7. It also contains benzalkonium chloride, edetate disodium, sodium chloride, sodium hydroxide, hydrochloric acid, and purified water. Each bottle contains 345 sprays.

## CLINICAL PHARMACOLOGY

### Mechanism of Action

Ipratropium bromide is an anticholinergic (parasympatholytic) agent which, based on animal studies, appears to inhibit vagally-mediated reflexes by antagonizing the action of acetylcholine, the transmitter agent released at the neuromuscular junctions in the lung. In humans, ipratropium bromide has anti-secretory properties and, when applied locally, inhibits secretions from the serous and seromucous glands lining the nasal mucosa. Ipratropium bromide is a quaternary amine that minimally crosses the nasal and gastrointestinal membranes and the blood-brain barrier, resulting in a reduction of the systemic anticholinergic effects (e.g., neurologic, ophthalmic, cardiovascular, and gastrointestinal effects) that are seen with tertiary anticholinergic amines.

### Pharmacokinetics

**Absorption:** Ipratropium bromide is poorly absorbed into the systemic circulation following oral administration (2-3%). Less than 20% of an 84 mcg per nostril dose was absorbed from the nasal mucosa of normal volunteers, induced-cold patients, or perennial rhinitis patients.

**Distribution:** Ipratropium bromide is minimally bound (0 to 9% *in vitro*) to plasma albumin and  $\alpha_1$ -acid glycoprotein. Its blood/plasma concentration ratio was estimated to be about 0.89. Studies in rats have shown that ipratropium bromide does not penetrate the blood-brain barrier.

**Metabolism:** Ipratropium bromide is partially metabolized to ester hydrolysis products, tropic acid and tropane. These metabolites appear to be inactive based on *in vitro* receptor affinity studies using rat brain tissue homogenates.

**Elimination:** After intravenous administration of 2 mg ipratropium bromide to 10 healthy volunteers, the terminal half-life of ipratropium was approximately 1.6 hours. The total body clearance and renal clearance were estimated to be 2,505 and 1,019 mL/min, respectively. The amount of the total dose excreted unchanged in the urine ( $A_e$ ) within 24 hours was approximately one-half of the administered dose.

**Pediatrics:** Following administration of 42 mcg of ipratropium bromide per nostril two or three times a day in perennial rhinitis patients 6-18 years old, the mean amounts of the total dose excreted unchanged in the urine (8.6 to 11.1%) were higher than those reported in adult volunteers or adult perennial rhinitis patients (3.7 to 5.6%). Plasma ipratropium concentrations were relatively low (ranging from undetectable up to 0.49 ng/mL). No correlation of the amount of the total dose excreted unchanged in the urine ( $A_e$ ) with age or gender was observed in the pediatric population.

**Special Populations:** Gender does not appear to influence the absorption or excretion of nasally administered ipratropium bromide. The pharmacokinetics of ipratropium bromide have not been studied in patients with hepatic or renal insufficiency or in the elderly.

**Drug-Drug Interactions:** No specific pharmacokinetic studies were conducted to evaluate potential drug-drug interactions.

### **Pharmacodynamics**

In two single-dose trials (n=17), doses up to 336 mcg of ipratropium bromide did not significantly affect pupillary diameter, heart rate, or systolic/diastolic blood pressure. Similarly, in patients with induced-colds, Atrovent® (ipratropium bromide) Nasal Spray 0.06% (84 mcg/nostril four times a day), had no significant effects on pupillary diameter, heart rate or systolic/diastolic blood pressure.

Two nasal provocation trials in perennial rhinitis patients (n=44) using ipratropium bromide nasal spray showed a dose dependent increase in inhibition of methacholine induced nasal secretion with an onset of action within 15 minutes (time of first observation).

Controlled clinical trials demonstrated that intranasal fluorocarbon-propelled ipratropium bromide does not alter physiologic nasal functions (e.g., sense of smell, ciliary beat frequency, mucociliary clearance, or the air conditioning capacity of the nose).

### **Clinical Trials**

The clinical trials for Atrovent® (ipratropium bromide) Nasal Spray 0.03% were conducted in patients with nonallergic perennial rhinitis (NAPR) and in patients with allergic perennial rhinitis (APR). APR patients were those who experienced symptoms of nasal hypersecretion and nasal congestion or sneezing when exposed to specific perennial allergens (e.g., dust mites, molds) and were skin test positive to these allergens. NAPR patients were those who experienced symptoms of nasal hypersecretion and nasal congestion or sneezing throughout the year, but were skin test negative to common perennial allergens.

In four controlled, four- and eight-week comparisons of ATROVENT Nasal Spray 0.03% (42 mcg per nostril, two or three times daily) with its vehicle, in patients with allergic or nonallergic perennial rhinitis, there was a statistically significant decrease in the severity and duration of rhinorrhea in the ATROVENT group throughout the entire study period. An effect was seen as early as the first day of therapy.

There was no effect of ATROVENT Nasal Spray 0.03% on degree of nasal congestion, sneezing, or postnasal drip. The response to ATROVENT Nasal Spray 0.03% did not appear to be affected by the type of perennial rhinitis (NAPR or APR), age, or gender. No controlled clinical trials directly compared the efficacy of BID versus TID treatment.

### **INDICATIONS AND USAGE**

ATROVENT Nasal Spray 0.03% is indicated for the symptomatic relief of rhinorrhea associated with allergic and nonallergic perennial rhinitis in adults and children age 6 years and older. ATROVENT Nasal Spray 0.03% does not relieve nasal congestion, sneezing, or postnasal drip associated with allergic or nonallergic perennial rhinitis.

## **CONTRAINDICATIONS**

Atrovent® (ipratropium bromide) Nasal Spray 0.03% is contraindicated in patients with a history of hypersensitivity to atropine or its derivatives, or to any of the other ingredients.

## **WARNINGS**

Immediate hypersensitivity reactions may occur after administration of ipratropium bromide, as demonstrated by rare cases of urticaria, angioedema, rash, bronchospasm, anaphylaxis, and oropharyngeal edema.

## **PRECAUTIONS**

### **General**

1. Effects Seen with Anticholinergic Drugs: ATROVENT Nasal Spray 0.03% should be used with caution in patients with narrow-angle glaucoma, prostatic hyperplasia, or bladder neck obstruction, particularly if they are receiving an anticholinergic by another route.
2. Use in Hepatic or Renal Disease: ATROVENT Nasal Spray 0.03% has not been studied in patients with hepatic or renal insufficiency. It should be used with caution in those patient populations.

### **Information for Patients**

Patients should be advised that temporary blurring of vision, precipitation or worsening of narrow-angle glaucoma, mydriasis, increased intraocular pressure, acute eye pain or discomfort, visual halos or colored images in association with red eyes from conjunctival and corneal congestion may result if ATROVENT Nasal Spray 0.03% comes into direct contact with the eyes. Patients should be instructed to avoid spraying ATROVENT Nasal Spray 0.03% in or around their eyes. Patients who experience eye pain, blurred vision, excessive nasal dryness, or episodes of nasal bleeding should be instructed to contact their doctor. To ensure proper dosing, patients should be advised not to alter the size of the nasal spray opening. Patients should be reminded to carefully read and follow the accompanying **Patient's Instructions for Use**.

### **Drug Interactions**

No controlled clinical trials were conducted to investigate potential drug-drug interactions. ATROVENT Nasal Spray 0.03% is minimally absorbed into the systemic circulation; nonetheless, there is some potential for an additive interaction with other concomitantly administered medications with anticholinergic properties, including ATROVENT for oral inhalation.

## **Carcinogenesis, Mutagenesis, Impairment of Fertility**

Two-year oral carcinogenicity studies in rats and mice have revealed no carcinogenic activity at doses up to 6 mg/kg. This dose corresponds in rats and mice to approximately 190 and 95 times the maximum recommended daily intranasal dose in adults, respectively, and approximately 110 and 55 times the maximum recommended daily intranasal dose in children, respectively, on a mg/m<sup>2</sup> basis. Results of various mutagenicity studies (Ames test, mouse dominant lethal test, mouse micronucleus test, and chromosome aberration of bone marrow in Chinese hamsters) were negative.

Fertility of male or female rats at oral doses up to 50 mg/kg (approximately 1,600 times the maximum recommended daily intranasal dose in adults on a mg/m<sup>2</sup> basis) was unaffected by ipratropium bromide administration. At an oral dose of 500 mg/kg (approximately 16,000 times the maximum recommended daily intranasal dose in adults on a mg/m<sup>2</sup> basis), ipratropium bromide produced a decrease in the conception rate.

## **Pregnancy**

**Teratogenic Effects:** *Pregnancy Category B.*

Oral reproduction studies were performed at doses of 10 mg/kg in mice, 1,000 mg/kg in rats and 125 mg/kg in rabbits. These doses correspond, in each species, respectively, to approximately 160, 32,000, and 8,000 times the maximum recommended daily intranasal dose in adults on a mg/m<sup>2</sup> basis. Inhalation reproduction studies were conducted in rats and rabbits at doses of 1.5 and 1.8 mg/kg, respectively, (approximately 50 and 120 times, respectively, the maximum recommended daily intranasal dose in adults on a mg/m<sup>2</sup> basis). These studies demonstrated no evidence of teratogenic effects as a result of ipratropium bromide. At oral doses 90 mg/kg and above in rats (approximately 2,900 times the maximum recommended daily intranasal dose in adults on a mg/m<sup>2</sup> basis) embryotoxicity was observed as increased resorption. This effect is not considered relevant to human use due to the large doses at which it was observed and the difference in route of administration. However, no adequate or well controlled studies have been conducted in pregnant women. Because animal reproduction studies are not always predictive of human response, Atrovent® (ipratropium bromide) Nasal Spray 0.03% should be used during pregnancy only if clearly needed.

## **Nursing Mothers**

It is known that some ipratropium bromide is systemically absorbed following nasal administration; however the portion which may be excreted in human milk is unknown. Although lipid-insoluble quaternary cations pass into breast milk, the minimal systemic absorption makes it unlikely that ipratropium bromide would reach the infant in an amount sufficient to cause a clinical effect. However, because many drugs are excreted in human milk, caution should be exercised when ATROVENT Nasal Spray 0.03% is administered to a nursing mother.

## **Pediatric Use**

The safety of Atrovent® (ipratropium bromide) Nasal Spray 0.03% at a dose of two sprays (42 mcg) per nostril two or three times daily (total dose 168 to 252 mcg/day) has been demonstrated in 77 pediatric patients 6-12 years of age in placebo-controlled, 4-week trials and in 55 pediatric patients in active-controlled, 6 month trials. The effectiveness of ATROVENT Nasal Spray 0.03% for the treatment of rhinorrhea associated with allergic and nonallergic perennial rhinitis in this pediatric age group is based on an extrapolation of the demonstrated efficacy of ATROVENT Nasal Spray 0.03% in adults with these conditions and the likelihood that the disease course, pathophysiology, and the drug's effects are substantially similar to that of the adults. The recommended dose for the pediatric population is based on within and cross-study comparisons of the efficacy of ATROVENT Nasal Spray 0.03% in adults and pediatric patients and on its safety profile in both adults and pediatric patients. The safety and effectiveness of ATROVENT Nasal Spray 0.03% in patients under 6 years of age have not been established.

## **ADVERSE REACTIONS**

Adverse reaction information on ATROVENT Nasal Spray 0.03% in patients with perennial rhinitis was derived from four multicenter, vehicle-controlled clinical trials involving 703 patients (356 patients on ATROVENT and 347 patients on vehicle), and a one-year, open-label, follow-up trial. In three of the trials, patients received ATROVENT Nasal Spray 0.03% three times daily, for eight weeks. In the other trial, ATROVENT Nasal Spray 0.03% was given to patients two times daily for four weeks. Of the 285 patients who entered the open-label, follow-up trial, 232 were treated for 3 months, 200 for 6 months, and 159 up to one year. The majority (>86%) of patients treated for one year were maintained on 42 mcg per nostril, two or three times daily, of ATROVENT Nasal Spray 0.03%.

Table 1 shows adverse events, and the frequency that these adverse events led to the discontinuation of treatment, reported for patients who received ATROVENT Nasal Spray 0.03% at the recommended dose of 42 mcg per nostril, or vehicle two or three times daily for four or eight weeks. Only adverse events reported with an incidence of at least 2.0% in the ATROVENT group and higher in the ATROVENT group than in the vehicle group are shown.

**Table 1 % of Patients Reporting Events<sup>+</sup>**

	<b>Atrovent® (ipratropium bromide) Nasal Spray 0.03% (n=356)</b>		<b>Vehicle Control (n=347)</b>	
	<b>Incidence %</b>	<b>Discontinued %</b>	<b>Incidence %</b>	<b>Discontinued %</b>
Headache	9.8	0.6	9.2	0.0
Upper respiratory tract infection	9.8	1.4	7.2	1.4
Epistaxis <sup>1</sup>	9.0	0.3	4.6	0.3
Rhinitis*				
Nasal dryness	5.1	0.0	0.9	0.3
Nasal irritation <sup>2</sup>	2.0	0.0	1.7	0.6
Other nasal symptoms <sup>3</sup>	3.1	1.1	1.7	0.3
Pharyngitis	8.1	0.3	4.6	0.0
Nausea	2.2	0.3	0.9	0.0

<sup>+</sup> This table includes adverse events which occurred at an incidence rate of at least 2.0% in the ATROVENT group and more frequently in the ATROVENT group than in the vehicle group.

<sup>1</sup> Epistaxis reported by 7.0% of ATROVENT patients and 2.3% of vehicle patients, blood-tinged mucus by 2.0% of ATROVENT patients and 2.3% of vehicle patients.

<sup>2</sup> Nasal irritation includes reports of nasal itching, nasal burning, nasal irritation, and ulcerative rhinitis.

<sup>3</sup> Other nasal symptoms include reports of nasal congestion, increased rhinorrhea, increased rhinitis, posterior nasal drip, sneezing, nasal polyps, and nasal edema.

\* All events are listed by their WHO term; rhinitis has been presented by descriptive terms for clarification.

ATROVENT Nasal Spray 0.03% was well tolerated by most patients. The most frequently reported nasal adverse events were transient episodes of nasal dryness or epistaxis. These adverse events were mild or moderate in nature, none was considered serious, none resulted in hospitalization and most resolved spontaneously or following a dose reduction. Treatment for nasal dryness and epistaxis was required infrequently (2% or less) and consisted of local application of pressure or a moisturizing agent (e.g., petroleum jelly or saline nasal spray). Patient discontinuation for epistaxis or nasal dryness was infrequent in both the controlled (0.3% or less) and one-year, open-label (2% or less) trials. There was no evidence of nasal rebound (i.e., a clinically significant increase in rhinorrhea, posterior nasal drip, sneezing or nasal congestion severity compared to baseline) upon discontinuation of double-blind therapy in these trials.

Adverse events reported by less than 2% of the patients receiving ATROVENT Nasal Spray 0.03% during the controlled clinical trials or during the open-label follow-up trial, which are potentially related to ATROVENT's local effects or systemic anticholinergic effects include: dry mouth/throat, dizziness, ocular irritation, blurred vision, conjunctivitis, hoarseness, cough, and taste perversion.

There were infrequent reports of skin rash in both the controlled and uncontrolled clinical studies.

### **Post-Marketing Experience**

Allergic-type reactions such as skin rash, angioedema of the throat, tongue, lips and face, generalized urticaria (including giant urticaria), laryngospasm, and anaphylactic reactions have been reported with Atrovent® (ipratropium bromide) Nasal Spray 0.03% and for other ipratropium bromide-containing products, with positive rechallenge in some cases.

Additional side effects identified from the published literature and/or post-marketing surveillance on the use of ipratropium bromide-containing products (singly or in combination with albuterol), include: urinary retention, prostatic disorders, mydriasis, cases of precipitation or worsening of narrow-angle glaucoma, acute eye pain, wheezing, dryness of the oropharynx, sinusitis, tachycardia, palpitations, pain, edema, gastrointestinal distress (diarrhea, nausea, vomiting), bowel obstruction, and constipation.

After oral inhalation of ipratropium bromide in patients suffering from COPD/Asthma supraventricular tachycardia and atrial fibrillation have been reported.

### **OVERDOSAGE**

Acute overdosage by intranasal administration is unlikely since ipratropium bromide is not well absorbed systemically after intranasal or oral administration. Following administration of a 20 mg oral dose (equivalent to ingesting more than four bottles of ATROVENT Nasal Spray 0.03%) to 10 male volunteers, no change in heart rate or blood pressure was noted. Following a 2 mg intravenous infusion over 15 minutes to the same 10 male volunteers, plasma ipratropium concentrations of 22-45 ng/mL were observed (>100 times the concentrations observed following intranasal administration). Following intravenous infusion these 10 volunteers had a mean increase of heart rate of 50 bpm and less than 20 mmHg change in systolic or diastolic blood pressure at the time of peak ipratropium levels.

Oral median lethal doses of ipratropium bromide were greater than 1,001 mg/kg in mice (approximately 16,000 and 9,500 times the maximum recommended daily intranasal dose in adults and children, respectively, on a mg/m<sup>2</sup> basis), 1,663 mg/kg in rats (approximately 53,000 and 32,000 times the maximum recommended daily intranasal dose in adults and children, respectively, on a mg/m<sup>2</sup> basis), and 400 mg/kg in dogs (approximately 43,000 and 25,000 times the maximum recommended daily intranasal dose in adults and children, respectively, on a mg/m<sup>2</sup> basis).

### **DOSAGE AND ADMINISTRATION**

The recommended dose of ATROVENT Nasal Spray 0.03% is two sprays (42 mcg) per nostril two or three times daily (total dose 168 to 252 mcg/day) for the symptomatic relief of rhinorrhea associated with allergic and nonallergic perennial rhinitis in adults and children age 6 years and older. Optimum dosage varies with the response of the individual patient.

Initial pump priming requires seven sprays of the pump. If used regularly as recommended, no further priming is required. If not used for more than 24 hours, the pump will require two sprays, or if not used for more than seven days, the pump will require seven sprays to reprime. ***Avoid spraying into eyes.***

#### **HOW SUPPLIED**

Atrovent® (ipratropium bromide) Nasal Spray 0.03% is supplied in a white high density polyethylene (HDPE) bottle fitted with a metered nasal spray pump, a green safety clip to prevent accidental discharge of the spray, and a clear plastic dust cap. It contains 31.1g of product formulation, 345 sprays, each delivering 21 mcg of ipratropium bromide per spray (70 µL), or 28 days of therapy at the maximum recommended dose (two sprays per nostril three times a day) (NDC 0597-0081-30).

**Store tightly closed at 25°C (77°F); excursions permitted to 15°-30°C (59°-86°F)** [see USP Controlled Room Temperature]. Avoid freezing. Keep out of reach of children. ***Do not spray in the eyes.***

**Address medical inquiries to: <http://us.boehringer-ingenelheim.com>, (800) 542-6257 or (800) 459-9906 TTY.**

Patients should be reminded to read and follow the accompanying **“Patient’s Instructions for Use”**, which should be dispensed with the product.

Distributed by:  
Boehringer Ingelheim Pharmaceuticals, Inc.  
Ridgefield, CT 06877 USA

Licensed from:  
Boehringer Ingelheim International GmbH

©Copyright Boehringer Ingelheim International GmbH  
2007, ALL RIGHTS RESERVED

Rev: December 2007

IT4000BL0507  
10001900/04

**Patient's Instructions for Use**

**Atrovent®**

(ipratropium bromide)

**Nasal Spray 0.03%**

**21 mcg/spray**

**Read complete instructions carefully before using.**

**In order to ensure proper dosing, do not attempt to change the size of the spray opening.**

ATROVENT Nasal Spray 0.03% is indicated for the symptomatic relief of rhinorrhea (runny nose) associated with allergic and nonallergic perennial rhinitis in adults and children age 6 years and older. ATROVENT Nasal Spray 0.03% does not relieve nasal congestion, sneezing, or postnasal drip associated with allergic or nonallergic perennial rhinitis.

Read complete instructions carefully and use only as directed.

**To Use:**

1. Remove the clear plastic dust cap and the green safety clip from the nasal spray pump (Figure 1). The safety clip prevents the accidental discharge of the spray in your pocket or purse.

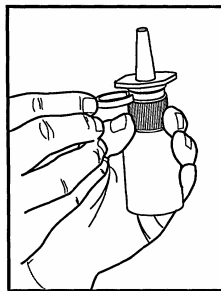


Figure 1

2. The nasal spray pump must be primed before Atrovent® (ipratropium bromide) Nasal Spray 0.03% is used for the first time. To prime the pump, hold the bottle with your thumb at the base and your index and middle fingers on the white shoulder area. Make sure the bottle points upright and away from your eyes. Press your thumb firmly and quickly against the bottle seven times (Figure 2). The pump is now primed and can be used. Your pump should not have to be reprimed unless you have not used the medication for more than 24 hours; repriming the pump will only require two sprays. If you have not used your nasal spray for more than seven days, repriming the pump will require seven sprays.



Figure 2

3. Before using ATROVENT Nasal Spray 0.03%, blow your nose gently to clear your nostrils if necessary.
4. Close one nostril by gently placing your finger against the side of your nose, tilt your head slightly forward and, keeping the bottle upright, insert the nasal tip into the other nostril (Figure 3). Point the tip toward the back and outer side of the nose.



Figure 3

5. Press firmly and quickly upwards with the thumb at the base while holding the white shoulder portion of the pump between your index and middle fingers. Following each spray, sniff deeply and breathe out through your mouth.

6. After spraying the nostril and removing the unit, tilt your head backwards for a few seconds to let the spray spread over the back of the nose.
7. Repeat steps 4 through 6 in the same nostril.
8. Repeat steps 4 through 7 in the other nostril (i.e., two sprays per nostril).
9. Replace the clear plastic dust cap and safety clip.
10. At some time before the medication is completely used up, you should consult your physician or pharmacist to determine whether a refill is needed. You should not take extra doses or stop using Atrovent® (ipratropium bromide) Nasal Spray 0.03% without consulting your physician.

**To Clean:**

If the nasal tip becomes clogged, remove the clear plastic dust cap and safety clip. Hold the nasal tip under running, warm tap water (Figure 4) for about a minute. Dry the nasal tip, reprime the nasal spray pump (step 2 above), and replace the plastic dust cap and safety clip.

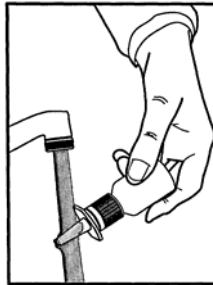


Figure 4

**Caution:**

ATROVENT Nasal Spray 0.03% is intended to relieve your rhinorrhea (runny nose) with regular use. It is therefore important that you use ATROVENT Nasal Spray 0.03% as prescribed by your physician. For most patients, some improvement in runny nose is usually apparent during the first full day of treatment with ATROVENT Nasal Spray 0.03%. Some patients may require up to two weeks of treatment to obtain maximum benefit.

**Do not spray ATROVENT Nasal Spray 0.03% in your eyes.** Should this occur, immediately flush your eye with cool tap water for several minutes. If you accidentally spray ATROVENT Nasal Spray 0.03% in your eyes, you may experience a temporary blurring of vision, visual halos or colored images in association with red eyes from conjunctival and corneal congestion, development or worsening of narrow-angle glaucoma, pupil dilation, or acute eye pain/discomfort, and increased sensitivity to light, which may last a few hours. Should acute eye pain or blurred vision occur, contact your doctor.

Should you experience excessive nasal dryness or episodes of nasal bleeding contact your doctor.

If you have glaucoma or difficulty urinating due to an enlargement of the prostate, be sure to tell your physician prior to using AROVENT Nasal Spray 0.03%.

If you are pregnant or you are breast feeding your baby, be sure to tell your physician prior to using ATROVENT Nasal Spray 0.03%.

**Address medical inquiries to: <http://us.boehringer-ingenelheim.com>, (800) 542-6257 or (800) 459-9906 TTY.**

**Store tightly closed at 25°C (77°F); excursions permitted to 15°-30°C (59°-86°F) [see USP Controlled Room Temperature]. Avoid freezing. Keep out of reach of children.**



Distributed by:  
Boehringer Ingelheim Pharmaceuticals, Inc.  
Ridgefield, CT 06877 USA

Licensed from:  
Boehringer Ingelheim International GmbH

©Copyright Boehringer Ingelheim International GmbH  
2007, ALL RIGHTS RESERVED

Rev: December 2007  
IT4000BL0507  
10001900/04